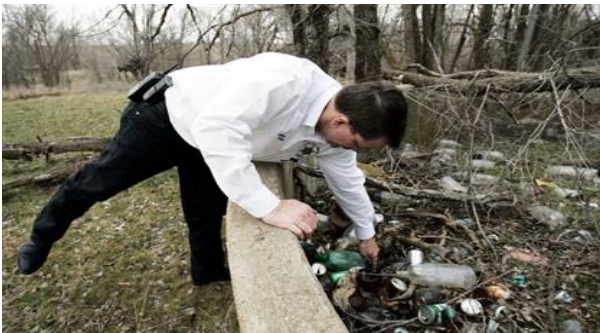


Meth Prevention Tip



Meth users open sores that don't heal; they have hallucinations and think that bugs are crawling under their skin, which causes them to pick at their skins.



Because of what it is made out of, meth produces a lot of garbage. It is not properly disposed of and it trashes our community.

People should learn more about meth so they don't become addicted. Meth affects families, communities and students at school. Every student should know about meth so they don't ever do it.

Resources

Magellan Crisis Hotline; 602-222-9444

Toll free number 1-800-631-1314

Sources: www.justthinktwice.com; Mind Over Matter: The Brain's Response to Methamphetamine, a NIDA publication. Article written by Maxine. O. Bush Peer Leaders